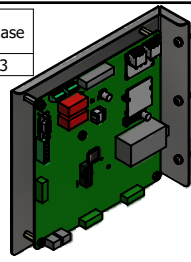


HGP Part Number	HorsePower (HP)	kVar	Harmonic	Voltage (V)	Maximum Amps (A)	HZ.	Phase
HGP0200AW3----	200	60	5th	480	240	60	3

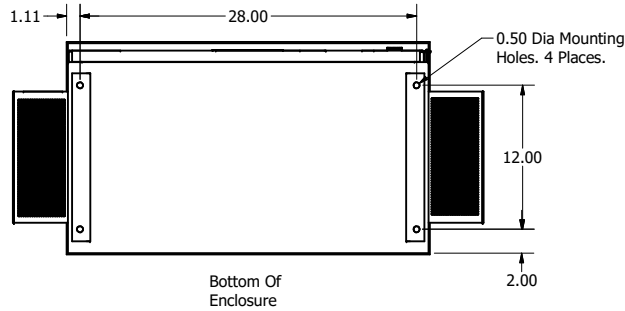
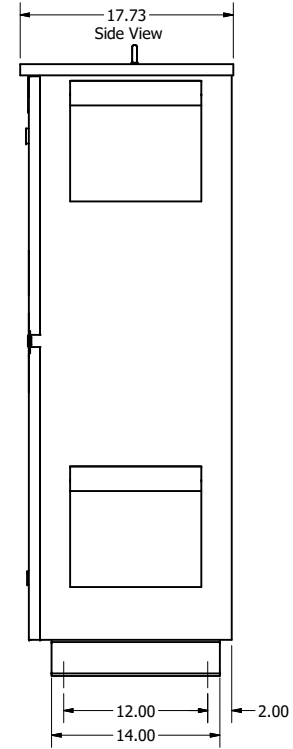
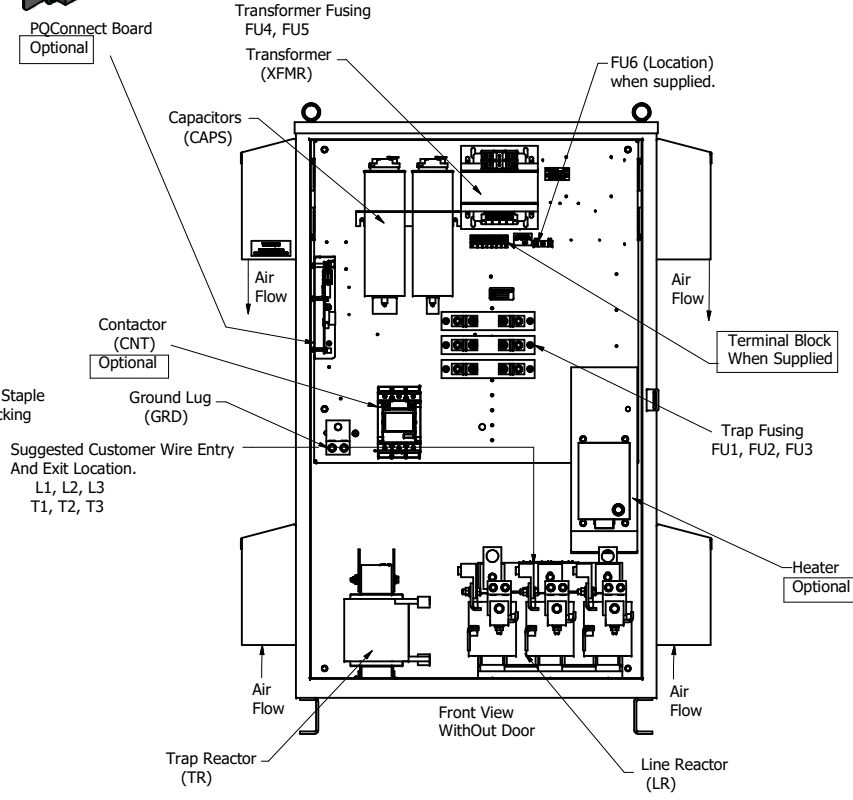
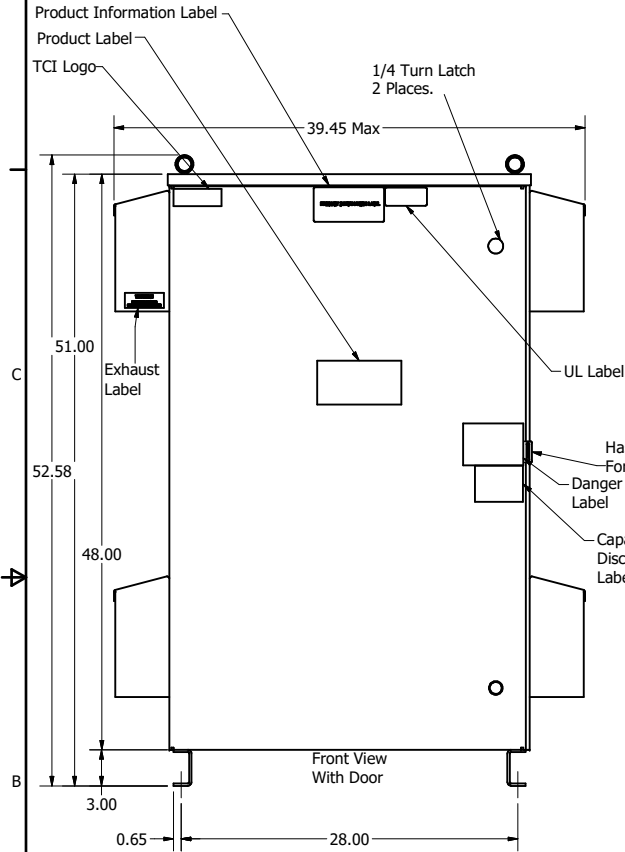


Note: For Torque Information See IOM Manual

Customer Connections.  
L1, L2, L3, T1, T2, T3  
Wire Range: Two, 350MCM to 2AWG.

Ground Lug  
Wire Range: Two, 350MCM to 2AWG.

HGP Part Number	Schematic Drawing #	Approx Weight (LBS)
HGP0200AW3S0000	28697-4S	470
HGP0200AW3C0000	28697-4	475
HGP0200AW3C000H	28697-4H	480
HGP0200AW3S1000	29587-PQ1	473
HGP0200AW3C1000	29597-PQ	478
HGP0200AW3C100H	29597-PQH	482



Components	HGP0200AW3----					
	S0000	C0000	C000H	S1000	C1000	C100H
Line Reactor (LR)	x	x	x	X	X	X
Trap Reactor (TR)	x	x	x	X	X	X
Capacitor (Cap)	x	x	x	X	X	X
Trap Fusing, FU1, FU2, FU3	x	x	x	X	X	X
Contactor (CNT)		x	x		X	X
Transformer (XFMR)	x	x	x	X	X	X
XFMR Fusing, FU4, FU5	x	x	x	X	X	X
FU6						X
Heater			x			X
PQConnect Board				X	X	X

Customer Is Responsible For Installation to Meet All National And Local Electrical Codes.

NOTE: USE ONLY HUBS OR FITTINGS THAT COMPLY WITH UL514B FOR TYPE 3R ENCLOSURES

Material(s) Shall be RoHS Compliant

THE INFORMATION AND DESIGNS CONTAINED IN THIS DRAWING ARE CONFIDENTIAL AND THE PROPRIETARY PROPERTY OF ALLIED MOTION TECHNOLOGIES INC. AND ITS SUBSIDIARIES. NEITHER THIS DESIGN NOR ANY INFORMATION CONTAINED IN THIS DRAWING MAY BE REPRODUCED OR DISCLOSED TO OTHERS WITHOUT THE EXPRESS WRITTEN CONSENT OF ALLIED MOTION TECHNOLOGIES INC. AND ITS SUBSIDIARIES.

REV	DESCRIPTION	DATE	BY
F	5636 GE to ABB CNT CHG.	2/15/2022	
E	Add PQconnect	6/11/18	DSW
NO	REVISION	DATE	BY

TOLERANCES (EXCEPT AS NOTED)	
DECIMAL	.XX ± .25 .XXX ± .10
FRACTIONAL	± 1/16
ANGULAR	± 1°

**TCI** W132N10611 (Rev 13) 5/6  
Germanstown, WI 53022  
© 2022 TCI, LLC  
An Official Motion Systems Company  
Harmonic Guard Passive  
HGP\_200HP\_480/3/60\_Type 3R  
DESIGN BY: DSW DATE: 1/16/14  
SCALE: 1/8 DRAWN BY: JCE  
105564DG  
SHEET 1 OF 1